



MTU
Ollscoil Teicneolaíochta na Mumhan
Munster Technological University

MTU
Ollscoil Teicneolaíochta na Mumhan
Munster Technological University

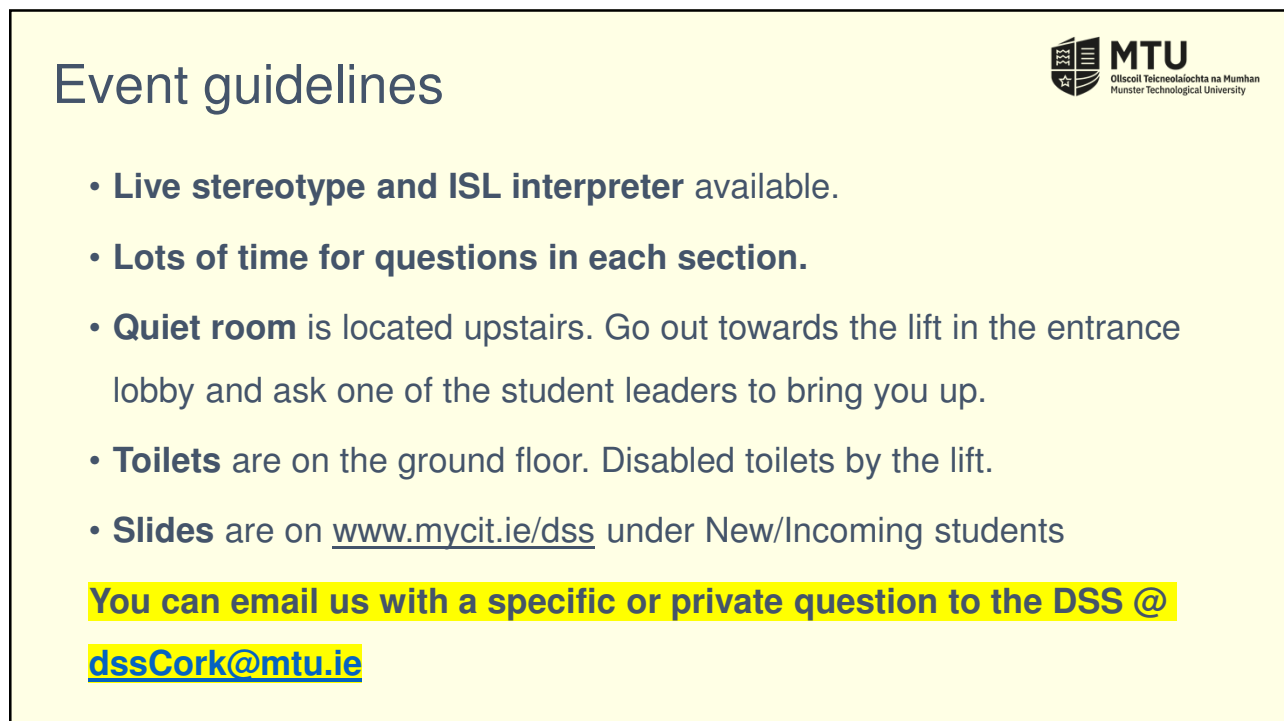
**MTU Cork campus
Disability Support Service (DSS)
DSS/ DARE Orientation 2022**

dssCork@mtu.ie
www.mycit.ie/dss

WELCOME!

www.mtu.ie

1



Event guidelines

MTU
Ollscoil Teicneolaíochta na Mumhan
Munster Technological University

- **Live stereotype and ISL interpreter** available.
- **Lots of time for questions in each section.**
- **Quiet room** is located upstairs. Go out towards the lift in the entrance lobby and ask one of the student leaders to bring you up.
- **Toilets** are on the ground floor. Disabled toilets by the lift.
- **Slides** are on www.mycit.ie/dss under New/Incoming students

You can email us with a specific or private question to the DSS @
dssCork@mtu.ie

2

Welcome



Deirdre Creedon

- MTU Academic Administration
and Student Affairs Manager
(acting)



Laura Coleman – Acting Access Officer:

<https://youtu.be/ZMCmYYCkSHI>

3

3

Agenda



- 09.45 Welcome
- 10.00 Key information on starting university @ MTU
- 10.15 What is the DSS?
- 10.30 Meet some DSS students
- 10.45 Break**
- 10.55 DSS supports – and meet some of the DSS team
- 11.25 Applying for supports and Next steps
- 11.40 Finish and Final Questions
- 11.45 Optional 30 minutes Campus Tour

4

BINGO!



- Play in pairs - Listen/watch the talks.
- Match 8 squares and shout Bingo!
 - 8 goodie bags to be won

5

Key things to know about university



- University year is in 2 semesters – 50% is usually done by Christmas. But first years may get assignments during Christmas week.
- **Full time students will be studying mostly on campus.**
- **Part-time evening students may be largely online.**



<https://www.mtu.ie/news/mtu-academic-year-2022-2023>

6

Key 2022/23 MTU starting dates



- **First year Orientation:** 19 - 23 September on Bishopstown campus. Email about your online course registration.
www.cit.ie/admissions/registration/year-1
- **Good Start Student ambassadors:** #GoodStart22
<https://studentengagement.cit.ie/goodstart>
- **First year classes start on Monday 26th September.** Online timetables available just before then – but these may change!



7

Responsibility



University = treated an adult

It's up to you to attend classes, manage your timetable, deadlines etc.

But there's lots of help and support at MTU!



8

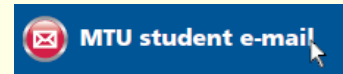
8

Communication



MTU communicates with you through:

1. **your MTU student email** and
2. **through Canvas** - the online app where you access your lecture notes, submit assignments, or do any online exams.



Make sure to put both on your phone and check daily!



IMPORTANT

9

Access laptop loan scheme



- First year students who are DARE eligible, also in receipt of special rate SUSI grant and who confirm need will automatically qualify to apply for a laptop.
- The DSS/Access Service will email DARE eligible and other Access students to their MTU student email.
- If you're not DARE eligible and/or don't receive SUSI, you can apply through the Student Assistance Fund.



www.mycit.ie/access_disability/student-assistance-fund/government-laptop-scheme-

10

Financial support



- **MTU Student Assistance Fund:** For costs of going to college plus fast-track application for laptop (online applications now open) www.mycit.ie/saf

Student Assistance Fund

- **1916 Bursaries** available for first time undergraduate students who meet criteria: www.soarforaccess.ie/1916-bursary-fund



- **HEAR:** If a student was also HEAR eligible – they will get financial support as part of their offer – hearCork@mtu.ie

HEAR HIGHER EDUCATION ACCESS ROUTE

11

Accommodation / Parking



Deirdre Falvey, Accommodation Officer, MTU
Student Centre, 1st Floor, Bishopstown Campus

T: 021 4335750

E: accommodationCork@mtu.ie

www.mycit.ie/accommodation



Parking is limited around the campuses – make sure to arrive early!



12

12

Questions?



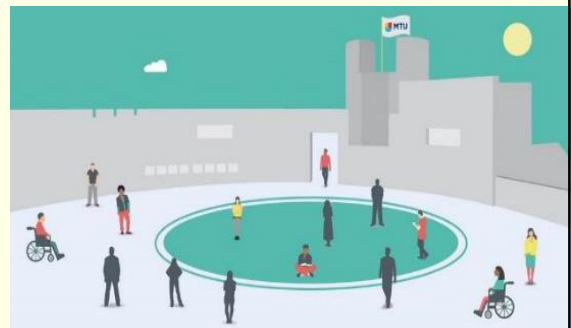
13

13

What is the DSS (Disability Support Service)?

The DSS supports a range of students with learning differences, health conditions or disabilities when studying at MTU, who may need support to access their course.

We support full-time and part-time students across all of MTU Cork campuses and who are studying online.



14

What is the DSS?



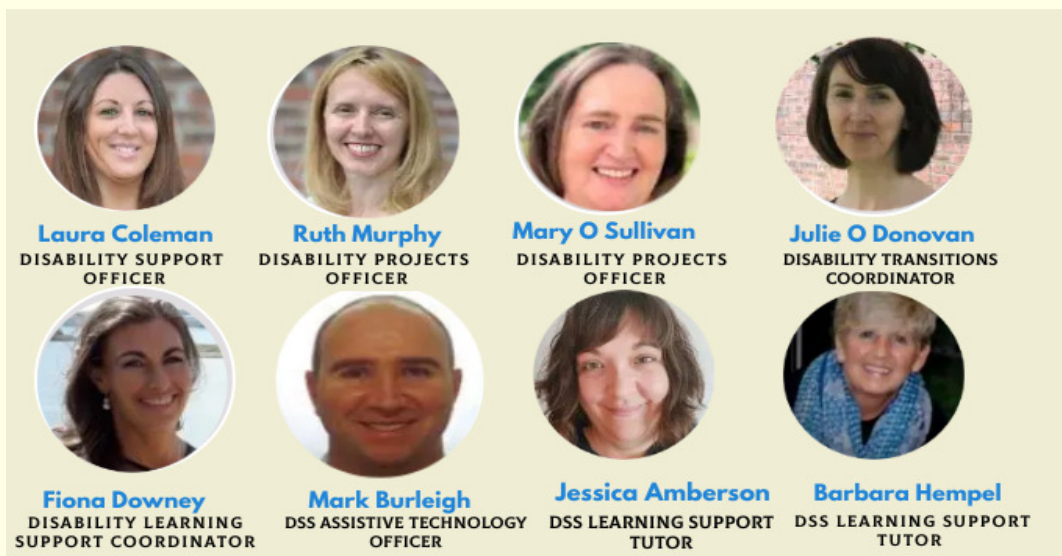
We support over **1000 students** with:

- Specific learning differences, including dyslexia and dyscalculia
- ADD/ADHD
- Dyspraxia (DCD) and dysgraphia
- Autism Spectrum
- Physical disabilities
- Blind/ Vision Loss
- Significant ongoing illnesses
- Deaf/ Hearing Loss
- Mental health
- Speech and language



15

Meet the DSS team!



16

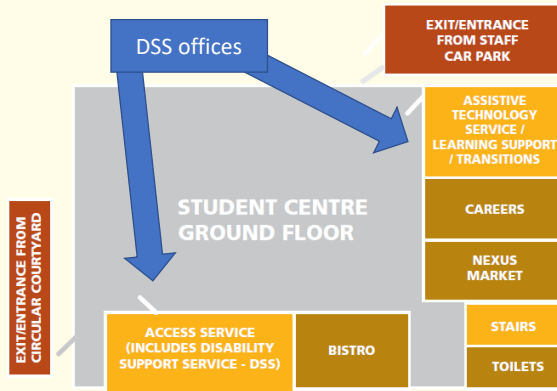
DSS – Bishopstown campus

<https://youtu.be/FZlky8F2ZeE>



- You generally need to book meetings with DSS staff.
- Emily Clifford, Access Service Administrator, at front desk - 021 433 5138

Map of Student Centre, Bishopstown Campus

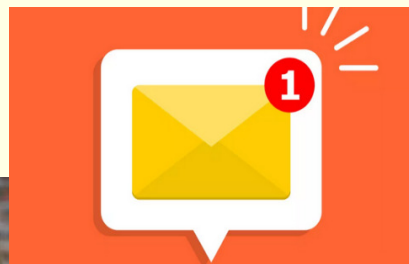


17

DSS team – Email queries



Ruth



Mary

The quickest way to reach us is emailing dssCork@mtu.ie

18

18

Confidentiality



MTU Cork campus DSS operates a strict confidentiality policy.

We cannot disclose any information about the student registration, academic progress, DSS supports, etc to any third party like parents or lecturers, unless we have the student's consent.

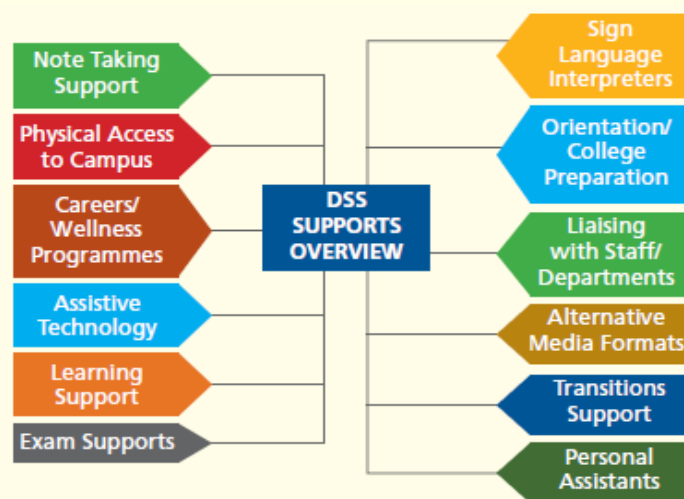


We can only break this if there is a health and safety risk.

You need to give us permission to be in contact with third parties – this needs to be in writing from your MTU student email each time.

19

DSS Supports



All DSS supports are confirmed in a student's needs assessment

20

20

DSS Supports



- Students should contact us as soon as possible if they need any of the following supports:
- ISL interpreter/speed text
- Access to disabled parking, transport, physical access to buildings
- Personal assistant to support you physically access the campus and/or personal care
- Mobility training or alternative format for students with a visual impairment



Email dssCork@mtu.ie

21

Questions?



22

22

Meet some DSS students



Joanie



Ruairi

<https://youtu.be/jCeO8Q0J9O4>

23

23

Questions?



24

24

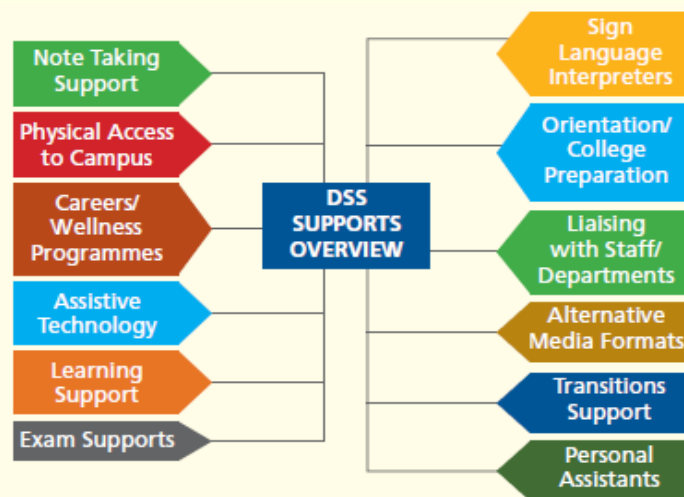
10-minute break



25

25

DSS Supports



All DSS supports are confirmed in a student's needs assessment

26

26

DSS Learning Support – Fiona Downey



fiona.downey@mtu.ie <https://youtu.be/Xw58RLZu6oA>

27

27

DSS Learning Support



Planning and structuring assignments	Academic writing skills	Quoting, referencing and plagiarism
Taking good notes	Managing deadlines	Exam and revision techniques
Presentation skills	Reading and research	Essay writing

1:1 support available and workshops

www.mycit.ie/access_disability/disability-support-service/learning-support

28

28



Top Tips

Manage your time

- Organise yourself
- Timetable Assignments
- Prioritise
- Start early
- Ask questions
- Get help
- Make time for YOU!



Drawbacks


- Disorganised
- Missing deadlines
- Avoiding classes
- Procrastination
- Consequences
- Overwhelmed
- Unwell
- Crisis point





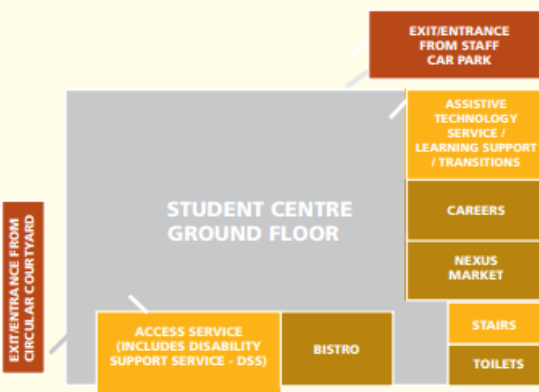
Engage and stay on the right side!

29



Where to find me


Map of Student Centre, Bishopstown Campus

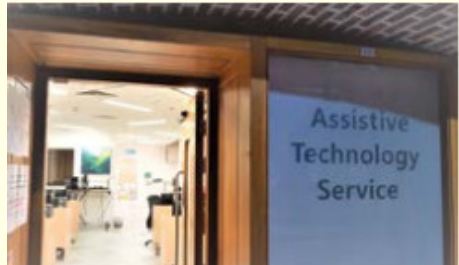


Learning Support

Transitions Support

Assistive Technology





30

CCAD/ CSM/ CCAE Learning Support

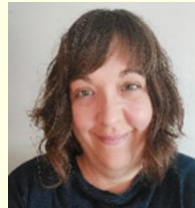


Jessica Amberson

Part-time tutor. Available by appointment:

- **Monday** – Crawford College of Art
- **Tuesday** – School of Music

Email: jessica.amberson@mtu.ie



31

31

NMCI Learning Support



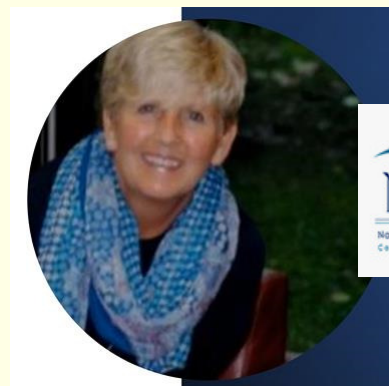
Barbara Hempel

Part-time tutor.

Available by appointment.

- **Thursday morning at NMCI.**
- Also supports postgraduate students.

Email: Barbara.Hempel@mtu.ie



32

32

DSS Learning Support online session



Tips
On:

College Preparation

Manage
Your Time



Organise
Yourself



Timetable
Assignments



Priorities



Tuesday 20 Sept 10.00-11.30am

[https://DSS_Learnings ONLINE_Sept22.eventbrite.ie](https://DSS_Learnings_ONLINE_Sept22.eventbrite.ie)

33

33



DSS Assistive Technology Service

Mark.Burleigh@mtu.ie

Mark Burleigh
Assistive Technology Officer

www.mtu.ie

34

DSS Assistive Technology (AT) Service

For DSS students ONLY

- ✓ Workstations with AT software
- ✓ Bookable room for speech to text use
- ✓ Workshops and training (online)
- ✓ Software installed to help students with their studies –
also available around campuses
- ✓ YouTube channel with online guides:

<https://www.youtube.com/user/AccessATS>

Mark Burleigh Full time DSS AT Officer based in the Student Centre



35

Assistive Technologies

Literacy/Proofreading Software:

- Read Write, Ginger and Grammarly

Mind Mapping:

- Inspiration and MindView

Voice-Recognition Software:

- Dragon, Google Voice Typing, Word Dictate



Contact
Mark.Burleigh@mtu.ie

36

Assistive Technology online session



Tools for Reading & Writing - Tuesday 20 Sept 12-1pm

https://DSSAT_ONLINE_Sept22.eventbrite.ie

37

37

Learn about the Transitions Programme



Available to autistic students with the DSS for their first year of university.



One to one Support by meetings on your campus, in person, by video call, phone or email.

PREPARE Guide for students in first year of university

www.mycit.ie/prepare

Julie O'Donovan - JulieA.ODonovan@mtu.ie



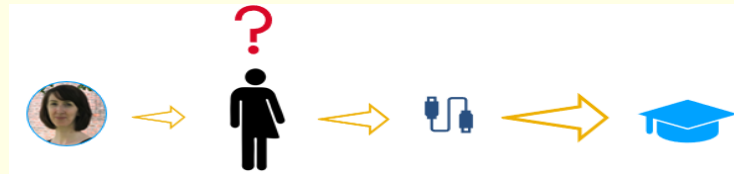
38

Transitions Programme



**Find out more at our online talk on
Wednesday 21st September, 6.30-7.30pm**

Book your place at: https://DSSTransitions_Sept22.eventbrite.ie



www.mycit.ie/access_disability/disability-support-service/transitions-programme-coordina



39

Examination Supports



Examination supports are listed on your DSS Needs Assessment document. These can include :

- **10 minutes per hour Extra time**
- **Smaller exam room.**
- **Marking guidelines** instead of a spelling and grammar waiver.
- **Reading software** instead of readers.
- **Typing** instead of scribes.



Personal supports will be discussed in individual cases with the DSS.

40

Examination Supports



Examination supports are organised by Examinations staff on your campus on your request.

- **Bishopstown: Shane Falvey** examsdssCork@mtu.ie
- **Cork School of Music: CSM.FullTimeCoursesCork@mtu.ie**
- **NMCI: Theresa Brien** theresa.brien@mtu.ie

(Note the Department of Transport notice on access to exam supports in NMCI.)

www.mycit.ie/examinations/support/

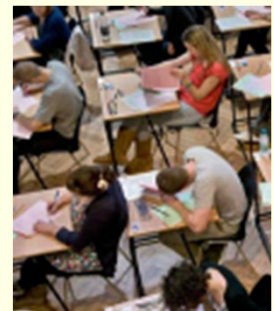


41

Examination Supports - Bishopstown



- Support with Assessments / Exams On-Campus & Remotely
- Deadline for requesting supports, Semester 1 Examinations:
Friday 11th November 2022
- Students must email their individual lecturers their extra time requests for assessments in advance and include their needs assessment



www.mycit.ie/examinations/support/

42

Questions



43

43

How to apply for DSS supports?

- **STEP 1: Fill out Online Application Form:**
www.mycit.ie/access_disability/disability-support-service/registering
- **STEP 2: Submit documents by email** www.mycit.ie/documents-needed
 (DSS already has copies of documents from CAO/DARE). Attend classes and sign up to DSS Canvas module /go to DSS sessions
- **STEP 3: Have a needs assessment which confirms DSS supports / reasonable accommodations.** You may have either a 1:1 or group meeting with DSS staff. Your needs assessment document is sent to your MTU student email. You may be waiting a few weeks to be contacted by the DSS especially in September/October.



44

Your Needs assessment /supports



- Your needs assessment document lists the supports or reasonable accommodations you are entitled to.
- It is your document – you decide what to do with it.
- **And it's your responsibility to engage with supports recommended in your needs assessment and email.**
- If you are having a problem, please to speak to your lecturer, course-coordinator, or head of department or contact us!

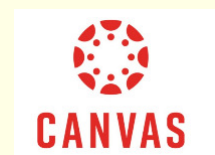


45

MTU Supports: www.mycit.ie

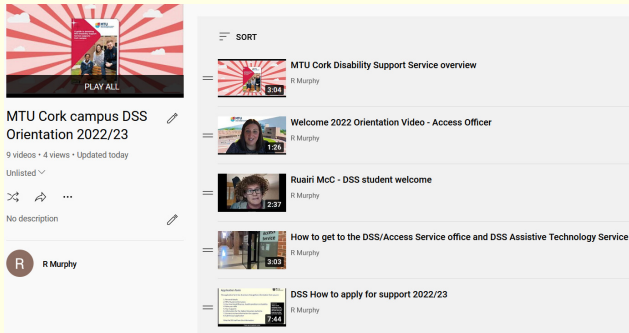


- ✓ Academic Learning Centre – free subject classes
- ✓ Academic Success Coaching
- ✓ Student's Union
- ✓ Access Service – financial help /HEAR/ Mature students
- ✓ Careers Service / Counselling Service
- ✓ Library
- ✓ Medical Centre & ERT
- ✓ Sports, Clubs and Societies
- ✓ IT Support and Canvas help



46

DSS information



www.mycit.ie/dssstudentguide



https://youtube.com/playlist?list=PLwqEepIk-AG3_sNe4zqEwrVtIF-tcNu1e

Dedicated Canvas module



47

Reminder – DSS online events



When?	What?
Tues 20 Sept 10.00-11.30am	Learning Support skills workshop for new students: notetaking, writing and studying.
Tues 20 Sept 12-1pm	Assistive technology tools for reading/writing skills workshop for new students
Wed 21 Sept 6.30-7.30pm	DSS Transitions programme for new students on the autism spectrum talk – for new students/parents/guardians

Book your place at: www.mycit.ie/dss - under New/Incoming students

48

What's Next?



Enjoy starting in MTU!

- Register for your course
- Set up your email and Canvas and check them daily!
- Fill out DSS Online Application Form and sign up for DSS Canvas module / look over DSS guide/orientation videos
- Contact us immediately if you have an urgent query. dssCork@mtu.ie
- Start to get to know the campus



JUST
ASK

Follow us: Instagram: @mtucork_dss Twitter: @MTUCork_DSS

Facebook: www.facebook.com/mtucorkdss

49

Optional tour with student leaders



50

50