



MTU
Ollscoil Teicneolaíochta na Mumhan
Munster Technological University

**MTU Cork Disability Support Service (DSS)
Transitions Programme**
September 2022

dssCork@mtu.ie
www.mycit.ie/dss




Prepare
Transitioning to University


www.mtu.ie

1


Meet Today's Team




Julie



Ruth



Mary



Bridie

2

Session outline

- **18.30** **Welcome & Introductions - Julie**
- **18.35** **Transitions Programme Overview -Julie**
- **18.45** **Student view - Bridie**
- **18.55** **Questions – Julie, Bridie**
- **19.00** **Accessing Transitions / DSS Supports – Ruth**
- **19.15** **Questions - Ruth, Mary, Julie**
- **19.30** **Finish**

3

3

University Transitions

Learn about the Transitions Programme



8

Who I Am

- I am part of the Disability Support Service Team.
- I assist autistic students in their first year at MTU.
- I offer guidance on navigating the MTU environment.



Julie

Transitions Programme
Co Ordinator



9

What to expect?

- One to One Transition Support
- Information Resources
- Collaboration with the Aspect Service
- Linking with Student Services within MTU

What suits your transition needs?



10

What I do

- I provide one to one transition support
- In person, online, by phone or email.
- **Guidance, solutions, advice, ideas, suggestions!**

Working together



11

Conversation Topics

- **Getting to know your campus**
- How the university learning system works
- Communicating with your lecturers
- Finding the right people to support you
- How to use your needs assessment

The New Physical Environment



12

Where we meet

- On your Campus
- Online by video chat
- By phone
- By Email



Transitions Programme Office

Located in the:
Assistive Technology Service,
Student Centre,
Bishopstown Campus.

13

HOW to begin

- Discuss at your Needs Assessment
- You can email the DSS any time during the year
- Email Julie directly



14

Dear First Years

A message for you....
from a second year.



15

Prepare Entry Guide 2022



Prepare
Transitioning to University

The Prepare entry guide is designed to support you as you transition or move into university. It aims to inform and help you feel more prepared as you make this change



www.mycit.ie/prepare

16

Welcome to Munster Technological University (MTU)

The Prepare entry guide is designed to support you as you transition or move into university. The guide aims to inform and help you feel more prepared as you make this change. The Disability Support Service (DSS) and Transitions Support are available with any additional information that you need. Transitions support is part of the supports the DSS offers autistic students for their first year of university.

INDEX

The New Physical Environment	2
Food Options on the Bishopstown Campus	3
The New Learning Environment	4
Communication at University	5
Communication with Lecturers	6
Communication by Email	7
DSS Needs Assessment	8
Transition Programme One to One Support	9
Student View	10
Planning Information	11

17

Time for questions?

I'm happy to answer questions by email as well.

Email: JulieA.ODonovan@MTU.ie

18

What is it Like ?

"Well, it is a meeting where you can be yourself and a place to re energise yourself.

Also, it helps to learn information about exams, communication skills, living independently and also, how to engage with the college.

Participating and using the transition services and the DSS is not embarrassing, and it is nothing to be ashamed about."



Bridie

BSc Agri Bioscience

19

Any questions?

For students who have applied to Aspect 

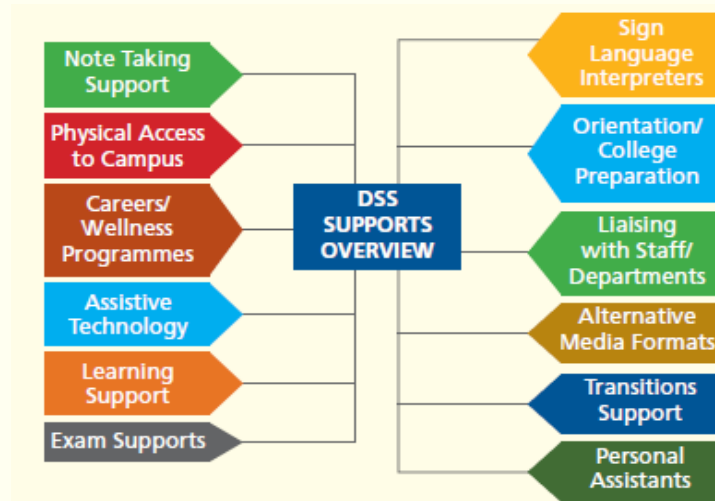
Drop in session – Bishopstown campus
Monday 3 October

Email: JulieA.ODonovan@MTU.ie



20

How to access Transitions Programme



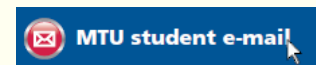
All DSS supports are confirmed in a student's needs assessment

21

21

How to apply for DSS supports?

- **STEP 1: Fill out Online Application Form:**
www.mycit.ie/access_disability/disability-support-service/registering
- **STEP 2: Submit documents by email** www.mycit.ie/documents-needed
 (DSS already has copies of documents from CAO/DARE). Attend classes and sign up to DSS Canvas module /go to DSS sessions
- **STEP 3: Have a needs assessment which confirms DSS supports / reasonable accommodations.**
- You will have a 1:1 meeting with DSS staff. Your needs assessment document is sent to your MTU student email. You may be waiting a few weeks to be contacted by the DSS especially in September/October.



22

Communication

MTU communicates with students through:

1. **MTU student email** and
2. **through Canvas** - the online app where you access your lecture notes, submit assignments, or do any online exams.



Make sure to put both on mobile phone and check daily!



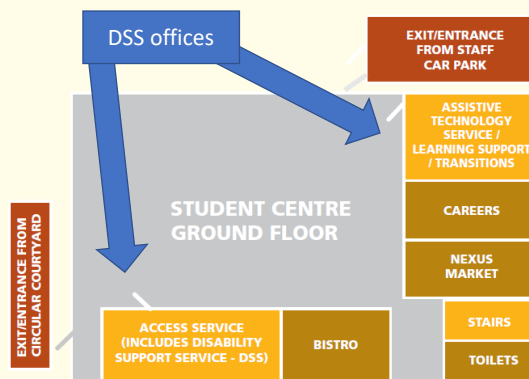
23

DSS – Bishopstown campus

<https://youtu.be/FZlky8F2ZeE>

- **Email: dssCork@mtu.ie**
- Emily Clifford, Access Service Administrator, at front desk - 021 433 5138

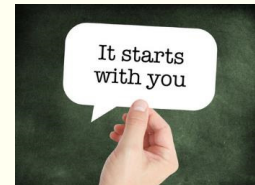
Map of Student Centre, Bishopstown Campus



24

Your Needs assessment /supports

- Your needs assessment document lists the supports or reasonable accommodations you are entitled to.
- It is your document – you decide what to do with it.
- **And it's your responsibility to engage with supports recommended in your needs assessment and email.**
- If you are having a problem, please to speak to your lecturer, course-coordinator, or head of department or contact us!



25

Confidentiality

MTU Cork campus DSS operates a strict confidentiality policy.

We cannot disclose any information about the student registration, academic progress, DSS supports, etc to any third party like parents or lecturers, unless we have the student's consent.

We can only break this if there is a health and safety risk.

Students need to give us permission to be in contact with third parties – this needs to be in writing from the MTU student email each time.



26

DSS/ Transitions support meetings

By appointment – usually on campus

Student needs to request in advance if a parent/family member/ supporter can attend. This is usually

Third parties at ongoing DSS students meetings is not DSS practice.



27

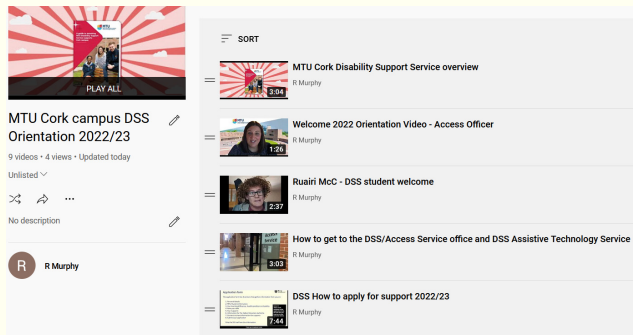
MTU Supports: www.mycit.ie

- ✓ Academic Learning Centre – free subject classes
- ✓ Academic Success Coaching
- ✓ Student's Union
- ✓ Access Service – financial help /HEAR/ Mature students
- ✓ Careers Service / Counselling Service
- ✓ Library
- ✓ Medical Centre & ERT
- ✓ Sports, Clubs and Societies
- ✓ IT Support and Canvas help



28

DSS information



https://youtube.com/playlist?list=PLwqEepIk-AG3_sNe4zqEwrVtIF-tcNu1e

www.mycit.ie/dssstudentguide



Dedicated Canvas module



29

Thank you for coming.
Any final questions?



30

30